

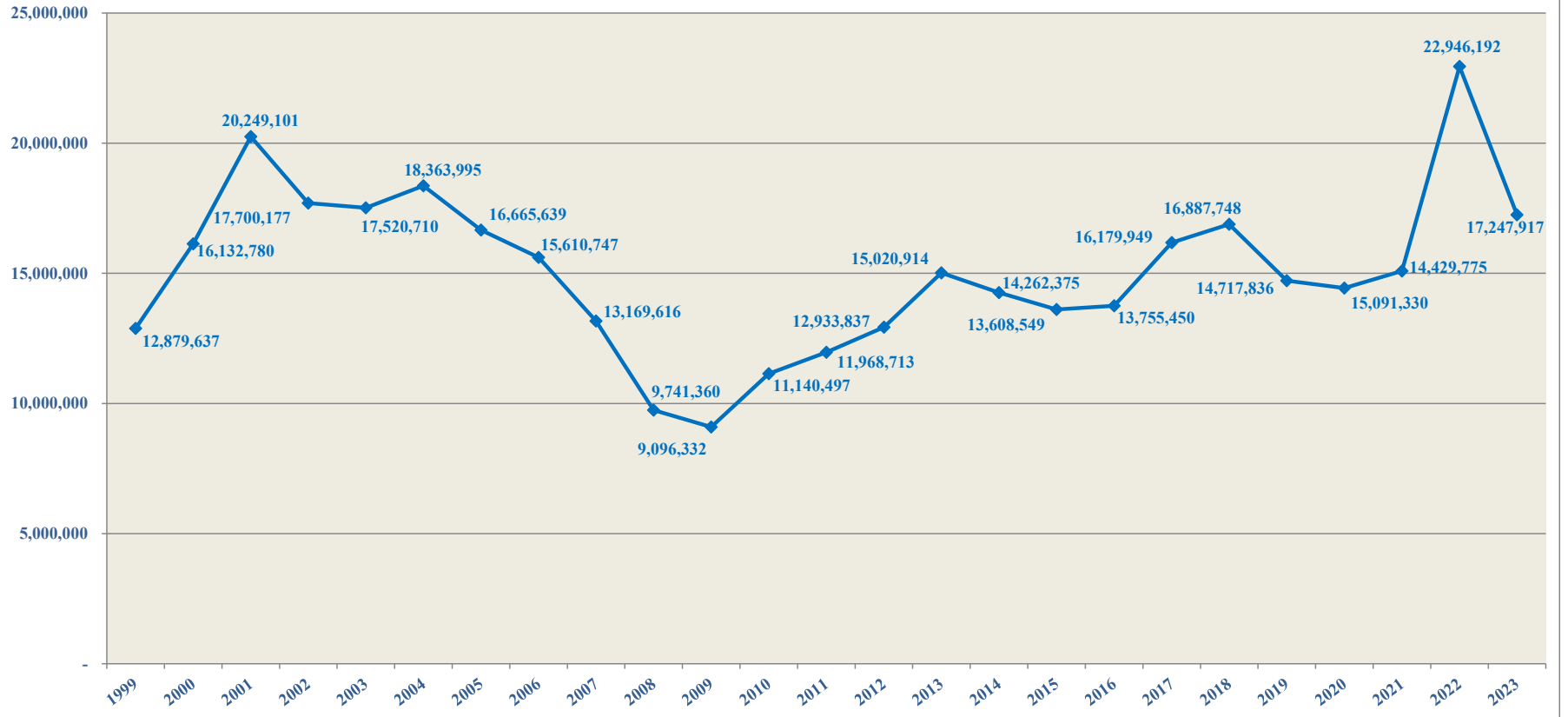
Floyd County, Georgia

***25 Year
Historical Reports
1999-2023***

Floyd County
25 Year Historical Reports
1999-2023
Table of Contents

	Summary Page	Detail Page
General Fund Cash and Investments	1	2
General Fund Total Revenues and Expenditures	3	4
General Fund Revenues	5	6
General Fund Expenditures	7	8-9
Water Operations	10	12
Water Bond Coverage	11	
General Fund- Fund Balance	13	14-15
General Fund & Other Fund Balances/ Net Position	16	
Millage Rates	17	18
Tax Millage Rates	19	
Assessed Value	20	21
Consumer Price Index	22	
Health Insurance Premiums/Claims	23	24-25
Miles of Streets Paved	26	27
Police Department Incident Reports	28	29
E911 Activity Report	30	31

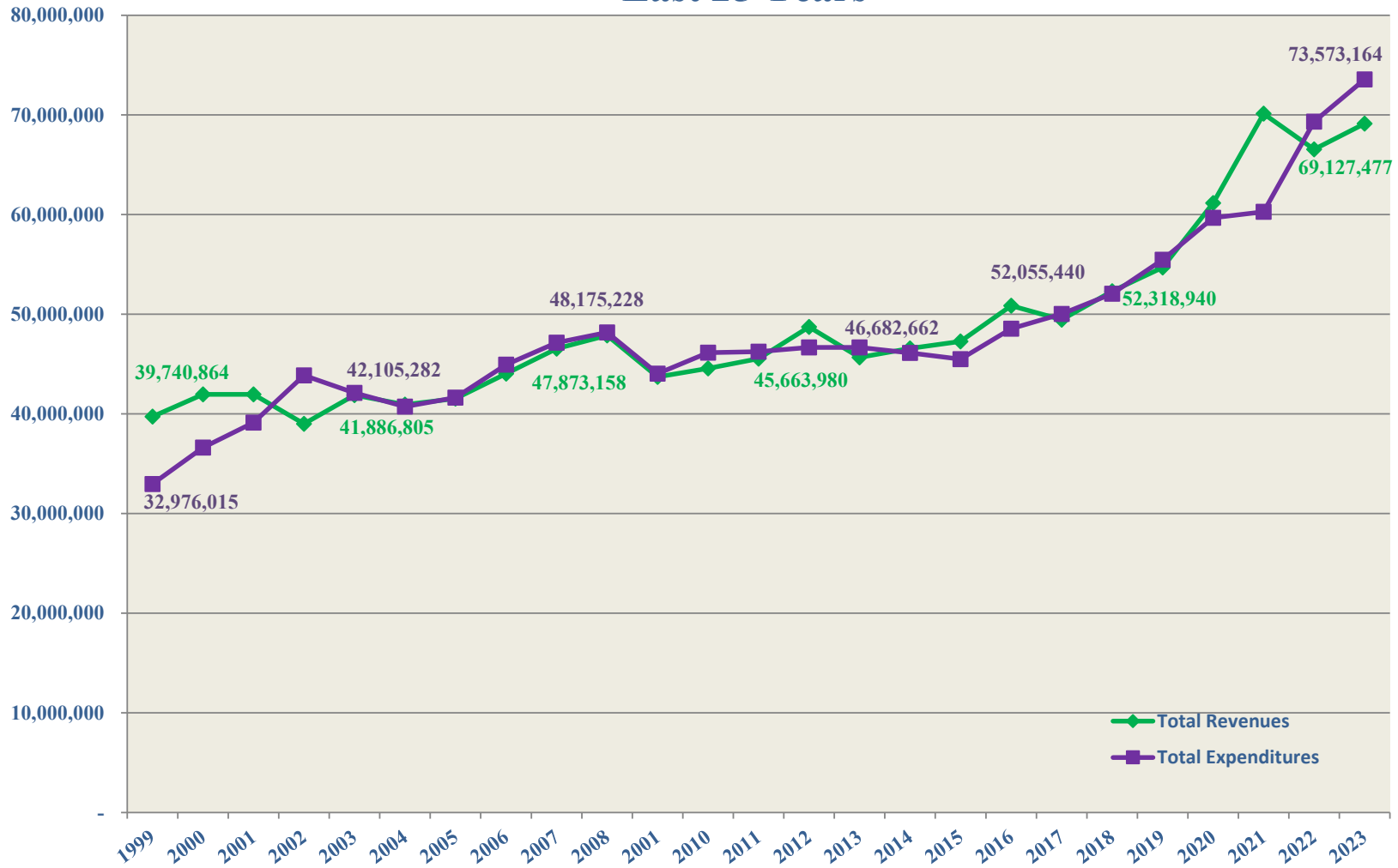
Floyd County General Fund Cash and Investments Last 25 Years



Floyd County General Fund Cash and Investments Last 25 Years

	1999	2000	2001	2002	2003
Cash	2,492,331	3,262,952	2,679,356	5,071,130	4,473,549
Investments	10,387,306	12,869,828	17,569,745	12,629,047	13,047,161
Total	12,879,637	16,132,780	20,249,101	17,700,177	17,520,710
	2004	2005	2006	2007	2008
Cash	4,476,555	6,364,573	13,701,474	5,114,077	4,634,707
Investments	13,887,440	10,301,066	1,909,273	8,055,539	5,106,653
Total	18,363,995	16,665,639	15,610,747	13,169,616	9,741,360
	2009	2010	2011	2012	2013
Cash	9,096,332	11,140,497	11,968,713	12,933,837	15,020,914
Investments	-	-	-	-	-
Total	9,096,332	11,140,497	11,968,713	12,933,837	15,020,914
	2014	2015	2016	2017	2018
Cash	14,262,375	13,608,549	13,755,450	16,179,949	16,887,748
Investments	-	-	-	-	-
Total	14,262,375	13,608,549	13,755,450	16,179,949	16,887,748
	2019	2020	2021	2022	2023
Cash	14,717,836	14,429,775	15,091,330	22,946,192	17,247,917
Investments	-	-	-	-	-
Total	14,717,836	14,429,775	15,091,330	22,946,192	17,247,917

Floyd County General Fund - Total Revenues and Expenditures Last 25 Years

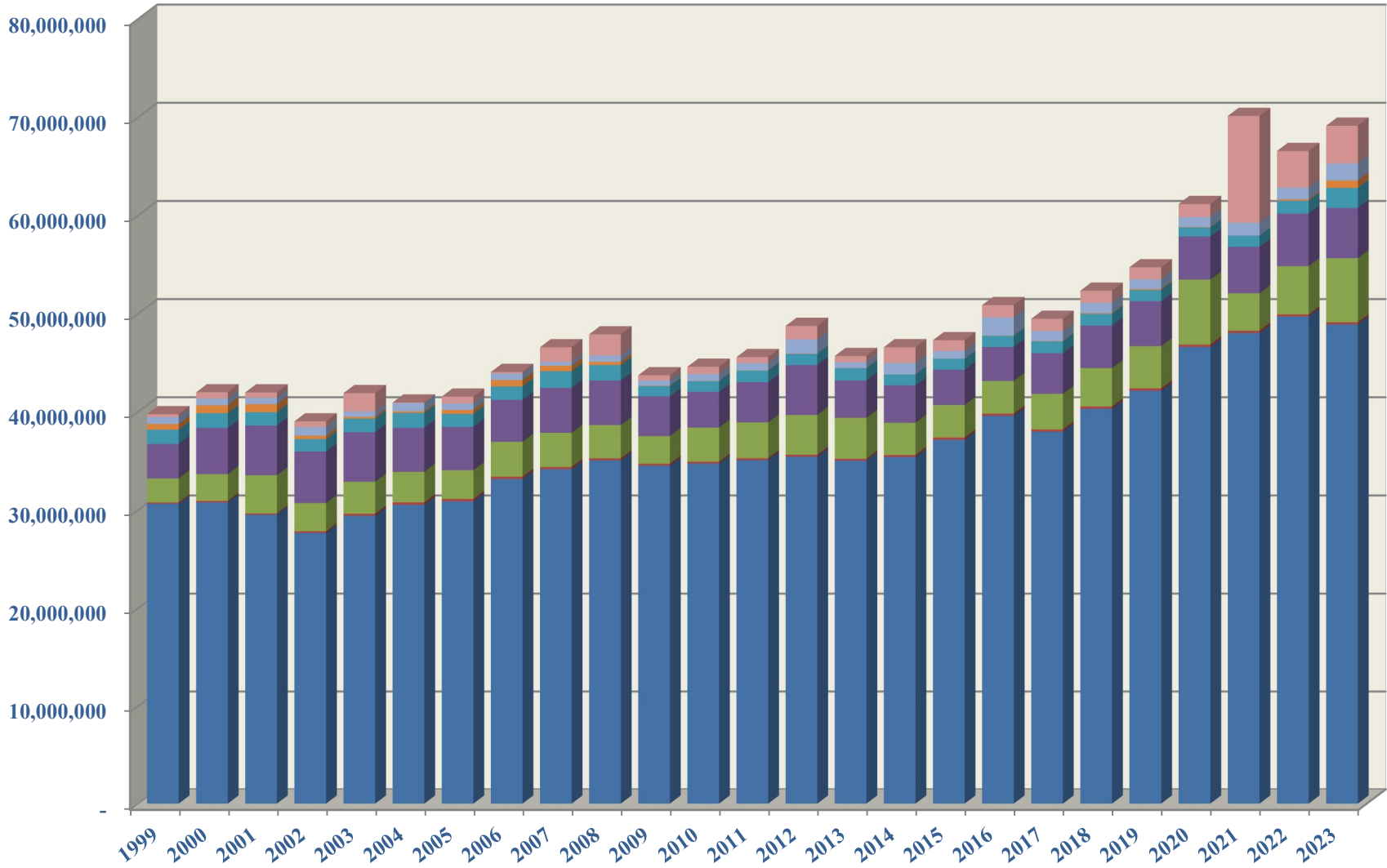


Floyd County
General Fund - Total Revenues and Expenditures
Last 25 Years

	1999	2000	2001	2002	2003
Total Revenues	39,447,759	41,319,049	41,393,465	38,417,840	40,017,057
Proceeds from capital lease obligations	293,105	651,442	508,562	519,647	-
Sale of capital assets	-	-	60,004	70,308	390,905
Transfers from other funds	-	-	-	-	1,478,843
Total Revenues	39,740,864	41,970,491	41,962,031	39,007,795	41,886,805
Total Expenditures	30,302,653	33,528,160	37,487,847	37,530,023	39,849,821
Transfers out	899,787	1,239,398	1,639,587	6,343,479	2,255,461
Transfers to component units	1,773,575	1,851,410	-	-	-
Total Expenditures	32,976,015	36,618,968	39,127,434	43,873,502	42,105,282
	2004	2005	2006	2007	2008
Total Revenues	40,876,476	40,821,567	43,882,562	45,071,100	45,722,909
Proceeds from capital lease obligations	-	-	-	-	-
Sale of capital assets	55,667	635,920	53,923	233,840	18,878
Transfers from other funds	-	74,647	101,218	1,254,489	2,131,371
Total Revenues	40,932,143	41,532,134	44,037,703	46,559,429	47,873,158
Total Expenditures	38,418,388	40,349,029	41,905,641	43,232,557	44,715,504
Transfers out	2,305,150	1,283,440	3,030,700	3,907,208	3,459,724
Transfers to component units	-	-	-	-	-
Total Expenditures	40,723,538	41,632,469	44,936,341	47,139,765	48,175,228
	2009	2010	2011	2012	2013
Total Revenues	43,172,437	43,841,193	44,947,249	47,353,697	45,031,920
Proceeds from capital lease obligations	-	-	-	-	-
Sale of capital assets	48,866	27,928	52,379	86,630	67,440
Transfers from other funds	488,399	703,703	557,565	1,295,004	564,620
Total Revenues	43,709,702	44,572,824	45,557,193	48,735,331	45,663,980
Total Expenditures	40,977,846	42,010,743	42,458,947	42,924,083	43,147,239
Transfers out	3,063,341	4,148,675	3,783,945	3,746,716	3,535,423
Transfers to component units	-	-	-	-	-
Total Expenditures	44,041,187	46,159,418	46,242,892	46,670,799	46,682,662
	2014	2015	2016	2017	2018
Total Revenues	44,956,520	46,180,274	49,606,952	48,210,622	51,083,217
Proceeds from capital lease obligations	-	-	-	-	-
Sale of capital assets	22,118	25,549	40,117	-	17,291
Transfers from other funds	1,586,621	1,069,946	1,204,858	1,246,175	1,218,432
Total Revenues	46,565,259	47,275,769	50,851,927	49,456,797	52,318,940
Total Expenditures	42,318,608	40,478,613	42,805,194	43,539,317	45,467,247
Transfers out	3,808,931	5,017,720	5,752,780	6,487,689	6,588,193
Transfers to component units	-	-	-	-	-
Total Expenditures	46,127,539	45,496,333	48,557,974	50,027,006	52,055,440
	2019	2020	2021	2022	2023
Total Revenues	53,474,001	59,825,695	59,242,496	62,817,060	65,279,332
Proceeds from capital lease obligations	-	-	-	-	-
Sale of capital assets	24,791	20,262	76,043	99,689	142,494
Issuance of leases	-	-	-	-	337,790
Issuance of SBITAs	-	-	-	-	439,039
Transfers from other funds	1,206,470	1,305,465	10,803,032	3,632,986	2,928,822
Total Revenues	54,705,262	61,151,422	70,121,571	66,549,735	69,127,477
Total Expenditures	48,604,341	52,150,732	54,140,528	62,086,561	66,502,891
Transfers out	6,866,257	7,526,723	6,153,179	7,253,285	7,070,273
Transfers to component units	-	-	-	-	-
Total Expenditures	55,470,598	59,677,455	60,293,707	69,339,846	73,573,164

Floyd County General Fund Revenues Last 25 Years

- Other Financing Sources
 - Interest Earned
 - Charges for Services
 - Licenses and Permits
- Miscellaneous
 - Fines and Forfeitures
 - Intergovernmental
 - Taxes

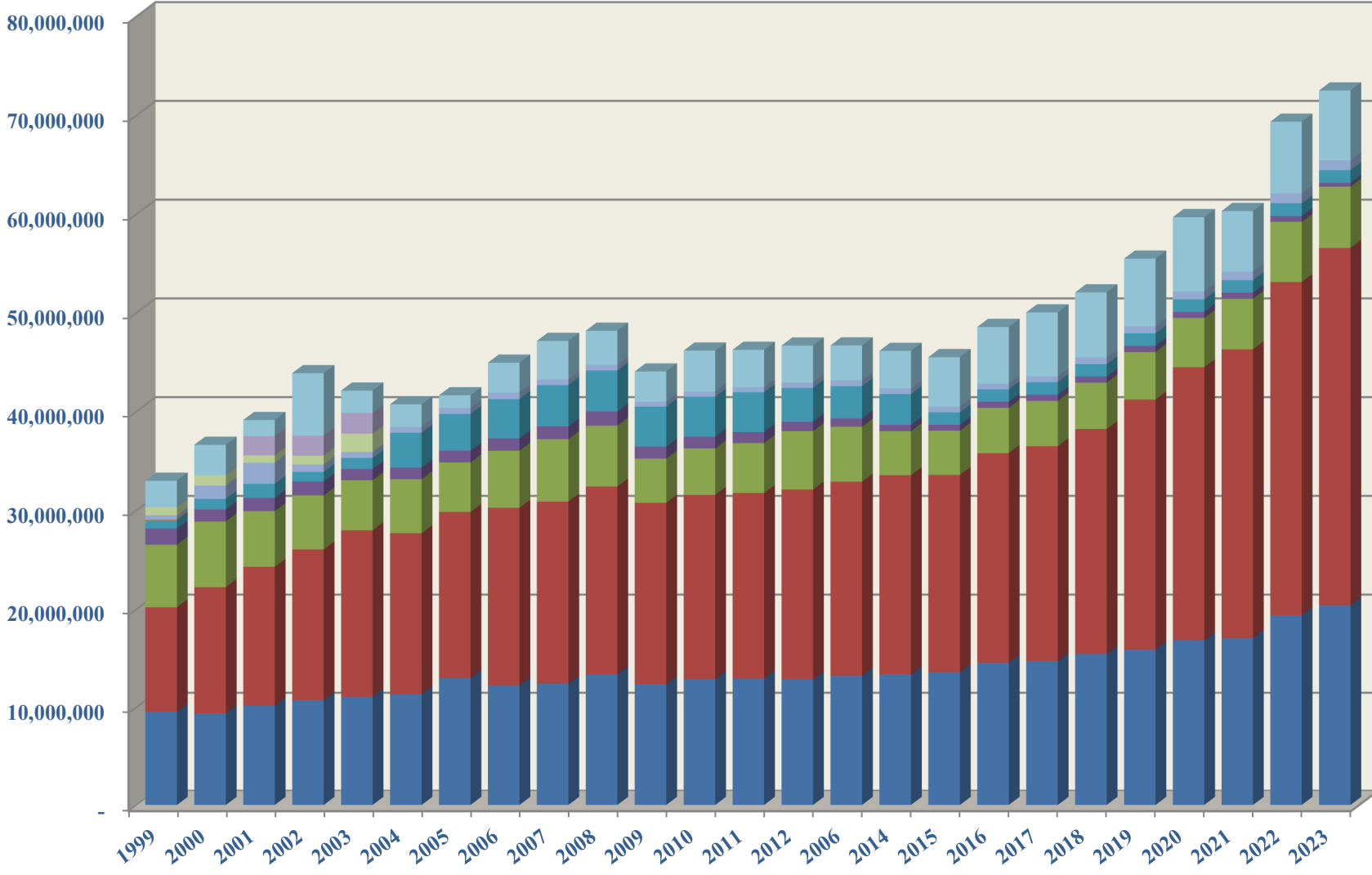


Floyd County General Fund Revenues Last 25 Years

	1999	2000	2001	2002	2003
Taxes	30,615,386	30,766,309	29,499,037	27,644,791	29,393,700
Licenses and Permits	138,539	153,982	135,313	178,216	213,113
Intergovernmental	2,438,522	2,715,271	3,894,477	2,864,411	3,255,394
Charges for Services	3,518,000	4,720,967	5,055,569	5,253,821	5,049,504
Fines and Forfeitures	1,453,674	1,486,502	1,354,258	1,264,244	1,375,384
Interest Earned	586,587	809,762	822,757	353,060	191,084
Miscellaneous	697,051	666,256	632,054	859,297	538,878
Other Financing Sources	293,105	651,442	568,566	589,955	1,869,748
Total Revenues	39,740,864	41,970,491	41,962,031	39,007,795	41,886,805
	2004	2005	2006	2007	2008
Taxes	30,510,715	30,864,334	33,140,849	34,138,870	35,034,463
Licenses and Permits	244,122	243,413	239,765	220,113	210,657
Intergovernmental	3,116,110	2,923,139	3,543,263	3,485,142	3,389,556
Charges for Services	4,487,642	4,419,515	4,273,609	4,583,158	4,539,493
Fines and Forfeitures	1,504,763	1,322,413	1,369,313	1,690,601	1,569,716
Interest Earned	160,532	411,238	650,131	560,333	328,297
Miscellaneous	852,592	637,515	665,632	392,883	650,727
Other Financing Sources	55,667	710,567	155,141	1,488,329	2,150,249
Total Revenues	40,932,143	41,532,134	44,037,703	46,559,429	47,873,158
	2009	2010	2011	2012	2013
Taxes	34,498,506	34,713,518	35,062,234	35,414,105	35,006,719
Licenses and Permits	193,847	192,211	198,645	199,057	194,674
Intergovernmental	2,820,418	3,476,775	3,649,460	4,050,843	4,164,387
Charges for Services	4,045,721	3,636,766	4,085,547	5,070,203	3,798,630
Fines and Forfeitures	1,054,451	1,077,817	1,174,109	1,144,106	1,264,514
Interest Earned	46,080	27,441	29,122	29,634	21,928
Miscellaneous	513,414	716,665	748,132	1,445,849	581,068
Other Financing Sources	537,265	731,631	609,944	1,381,634	632,060
Total Revenues	43,709,702	44,572,824	45,557,193	48,735,431	45,663,980
	2014	2015	2016	2017	2018
Taxes	35,381,582	37,131,469	39,579,342	37,966,102	40,302,086
Licenses and Permits	206,428	237,556	217,493	220,878	228,130
Intergovernmental	3,284,754	3,302,207	3,325,184	3,635,217	3,906,321
Charges for Services	3,807,963	3,601,975	3,462,318	4,136,516	4,324,162
Fines and Forfeitures	1,104,081	1,114,203	1,139,972	1,193,455	1,197,289
Interest Earned	15,394	16,809	21,047	40,828	74,976
Miscellaneous	1,156,318	776,055	1,861,596	1,017,626	1,050,253
Other Financing Sources	1,608,739	1,095,495	1,244,975	1,246,175	1,235,723
Total Revenues	46,565,259	47,275,769	50,851,927	49,456,797	52,318,940
	2019	2020	2021	2022	2023
Taxes	42,136,076	46,589,506	48,009,120	49,686,376	48,889,637
Licenses and Permits	236,383	241,176	236,324	218,384	217,587
Intergovernmental	4,295,524	6,624,222	3,808,796	4,918,356	6,524,489
Charges for Services	4,583,682	4,373,617	4,737,766	5,348,618	5,127,015
Fines and Forfeitures	1,130,940	936,765	1,142,162	1,313,209	2,034,860
Interest Earned	108,963	48,124	7,752	145,116	753,835
Miscellaneous	982,433	1,012,285	1,300,576	1,187,001	1,731,909
Other Financing Sources	1,231,261	1,325,727	10,879,075	3,732,675	3,848,145
Total Revenues	54,705,262	61,151,422	70,121,571	66,549,735	69,127,477

Floyd County General Fund Expenditures Last 25 Years

- Other Financing Uses
- Debt Service
- Housing and Development
- Culture and Recreation
- Public Works
- General Government
- Intergovernmental
- Capital Outlay
- Education
- Health and Welfare
- Public Safety



Floyd County General Fund Expenditures Last 25 Years

	1999	2000	2001	2002	2003
General Government	9,502,030	9,341,251	10,146,553	10,694,406	11,041,595
Public Safety	10,667,284	12,855,554	14,119,763	15,330,842	16,917,540
Public Works	6,335,714	6,661,479	5,634,269	5,470,280	5,074,003
Health and Welfare	1,633,019	1,207,958	1,340,445	1,406,982	1,135,424
Culture and Recreation	848,401	1,076,134	1,425,523	972,133	1,119,038
Education	81,915	-	-	-	-
Housing and Development	410,828	1,357,903	2,132,892	747,439	598,839
Capital Outlay	-	-	-	-	-
Debt Service	823,462	1,027,881	753,002	896,234	1,863,382
Intergovernmental	-	-	1,935,400	2,011,707	2,100,000
Other Financing Uses	2,673,362	3,090,808	1,639,587	6,343,479	2,255,461
Total Expenditures	32,976,015	36,618,968	39,127,434	43,873,502	42,105,282

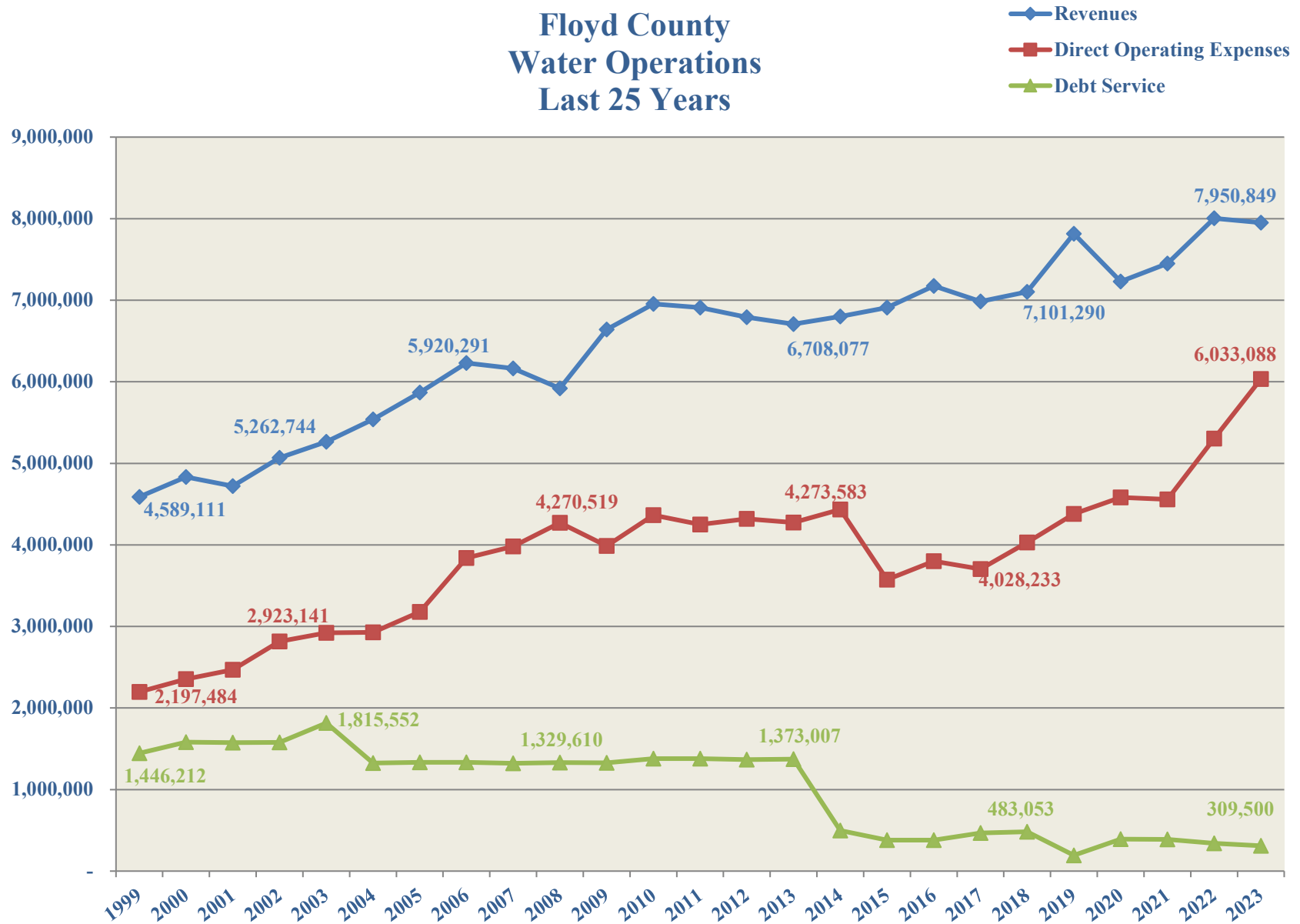
	2004	2005	2006	2007	2008
General Government	11,297,541	12,941,396	12,197,577	12,401,630	13,325,490
Public Safety	16,372,153	16,877,489	18,041,234	18,468,427	19,064,183
Public Works	5,469,017	5,013,188	5,777,170	6,321,363	6,170,438
Health and Welfare	1,167,576	1,190,878	1,249,742	1,286,151	1,424,387
Culture and Recreation	3,530,000	3,716,500	3,978,458	4,187,370	4,157,000
Education	-	-	-	-	-
Housing and Development	582,101	609,578	661,460	567,616	574,006
Capital Outlay	-	-	-	-	-
Debt Service	-	-	-	-	-
Intergovernmental	-	-	-	-	-
Other Financing Uses	2,305,150	1,283,440	3,030,700	3,907,208	3,459,724
Total Expenditures	40,723,538	41,632,469	44,936,341	47,139,765	48,175,228

	2009	2010	2011	2012	2013
General Government	12,328,260	12,842,262	12,897,040	12,805,541	13,203,126
Public Safety	18,418,702	18,697,340	18,838,834	19,286,137	19,686,074
Public Works	4,475,546	4,722,287	5,056,523	5,918,337	5,560,536
Health and Welfare	1,215,586	1,175,159	1,118,210	947,828	838,140
Culture and Recreation	4,045,000	4,052,500	4,028,550	3,422,670	3,267,670
Education	-	-	-	-	-
Housing and Development	494,752	521,195	519,790	543,570	591,693
Capital Outlay	-	-	-	-	-
Debt Service	-	-	-	-	-
Intergovernmental	-	-	-	-	-
Other Financing Uses	3,063,341	4,148,675	3,783,945	3,746,716	3,535,423
Total Expenditures	44,041,187	46,159,418	46,242,892	46,670,799	46,682,662

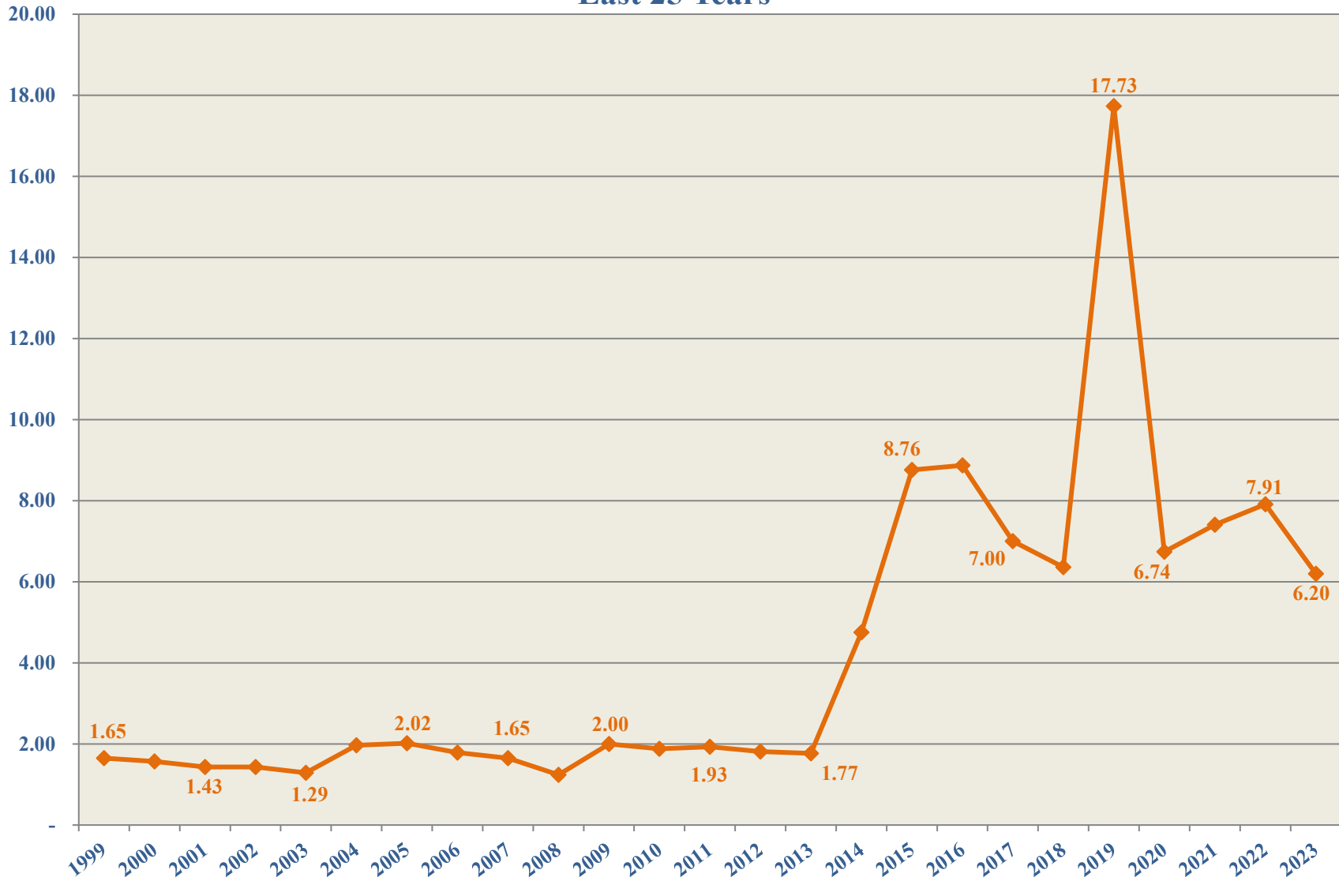
Floyd County General Fund Expenditures Last 25 Years

	2014	2015	2016	2017	2018
General Government	13,332,763	13,531,698	14,522,886	14,685,904	15,409,633
Public Safety	20,210,588	20,033,287	21,255,533	21,795,860	22,812,034
Public Works	4,451,483	4,489,590	4,587,338	4,585,942	4,689,945
Health and Welfare	640,606	589,616	612,412	623,333	622,667
Culture and Recreation	3,117,670	1,259,270	1,259,270	1,259,270	1,259,270
Education	-	-	-	-	-
Housing and Development	565,498	575,152	567,755	589,008	673,698
Capital Outlay	-	-	-	-	-
Debt Service	-	-	-	-	-
Intergovernmental	-	-	-	-	-
Other Financing Uses	3,808,931	5,017,720	5,752,780	6,487,689	6,588,193
Total Expenditures	46,127,539	45,496,333	48,557,974	50,027,006	52,055,440
	2019	2020	2021	2022	2023
General Government	15,858,313	16,787,178	17,042,523	19,371,877	20,387,780
Public Safety	25,348,152	27,685,167	29,248,050	33,731,624	36,166,934
Public Works	4,812,938	4,991,213	5,121,907	6,095,207	6,204,294
Health and Welfare	627,382	621,718	616,842	585,663	383,851
Culture and Recreation	1,259,270	1,259,270	1,259,270	1,291,270	1,291,270
Education	-	-	-	-	-
Housing and Development	698,286	806,186	851,936	1,010,920	996,033
Capital Outlay	-	-	-	-	780,430
Debt Service	-	-	-	-	292,299
Intergovernmental	-	-	-	-	-
Other Financing Uses	6,866,257	7,526,723	6,153,179	7,253,285	7,070,273
Total Expenditures	55,470,598	59,677,455	60,293,707	69,339,846	73,573,164

Floyd County Water Operations Last 25 Years



Floyd County Water Bond Coverage Last 25 Years

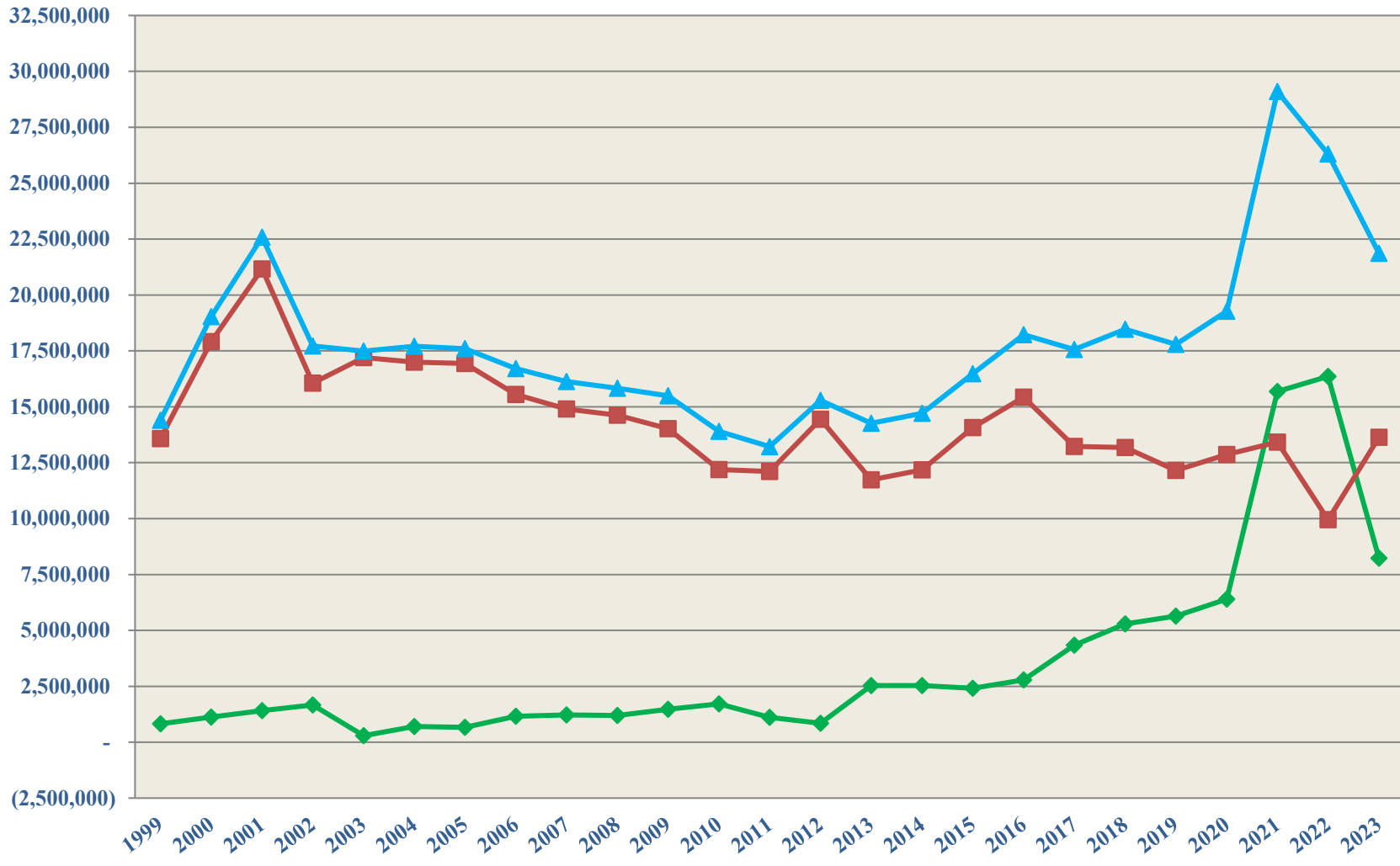


Water Operations Last 25 Years

	1999	2000	2001	2002	2003
Revenues	4,589,111	4,832,621	4,719,676	5,069,342	5,262,744
Direct Operating Expenses	2,197,484	2,353,558	2,470,103	2,815,153	2,923,141
Debt Service	1,446,212	1,581,925	1,574,185	1,579,550	1,815,552
Coverage	1.65	1.57	1.43	1.43	1.29
	2004	2005	2006	2007	2008
Revenues	5,537,836	5,868,044	6,229,476	6,162,822	5,920,291
Direct Operating Expenses	2,927,040	3,179,412	3,838,968	3,982,544	4,270,519
Debt Service	1,325,175	1,333,058	1,334,650	1,321,183	1,329,610
Coverage	1.97	2.02	1.79	1.65	1.24
	2009	2010	2011	2012	2013
Revenues	6,640,697	6,954,639	6,910,420	6,790,145	6,708,077
Direct Operating Expenses	3,987,916	4,363,193	4,251,064	4,319,480	4,273,583
Debt Service	1,329,013	1,378,853	1,378,167	1,366,807	1,373,007
Coverage	2.00	1.88	1.93	1.81	1.77
	2014	2015	2016	2017	2018
Revenues	6,800,009	6,909,075	7,176,235	6,985,603	7,101,290
Direct Operating Expenses	4,433,207	3,572,562	3,801,279	3,703,773	4,028,233
Debt Service	498,095	381,080	380,636	468,694	483,053
Coverage	4.75	8.76	8.87	7.00	6.36
	2019	2020	2021	2022	2023
Revenues	7,815,589	7,230,380	7,448,891	8,003,734	7,950,849
Direct Operating Expenses	4,378,225	4,581,123	4,556,466	5,303,653	6,033,088
Debt Service	193,916	393,350	390,250	341,500	309,500
Coverage	17.73	6.74	7.41	7.91	6.20

Floyd County General Fund Fund Balance Last 25 Years

- ◆ Reserved Totals
- Unassigned Totals
- ▲ Total Fund Balance



Floyd County General Fund Fund Balance Last 25 Years

	1999	2000	2001	2002	2003
Reserved for Encumbrances	-	-	-	-	-
Reserved for Inventory	140,419	108,249	104,975	110,692	101,776
Reserved for Advances to Other Funds	-	-	-	-	-
Reserved for Prepaid Expenditures	-	-	-	335	-
Reserved for Jail Surcharge	677,246	1,017,812	1,307,786	1,549,915	189,735
Reserved for Metro Task Fund	-	-	-	-	-
Reserved for Supp Juv Services	-	-	-	-	-
Reserved for Probation Drug	-	-	-	-	-
Reserved for Law Enforcement	-	-	-	-	-
Reserved for Equitable Sharing	-	-	-	-	-
Assigned for Capital	-	-	-	-	-
Unassigned for Capital	-	-	-	-	-
Unreserved - Unassigned	13,577,409	17,909,239	21,168,433	16,054,545	17,205,499
Total Fund Balance	14,395,074	19,035,300	22,581,194	17,715,487	17,497,010
	2004	2005	2006	2007	2008
Reserved for Encumbrances	-	-	-	-	-
Reserved for Inventory	99,889	114,455	106,921	127,773	115,943
Reserved for Advances to Other Funds	-	-	-	-	-
Reserved for Prepaid Expenditures	129,074	74,817	238,796	241,920	161,237
Reserved for Jail Surcharge	476,925	476,925	813,955	850,846	922,884
Reserved for Metro Task Fund	-	-	-	-	-
Reserved for Supp Juv Services	-	-	-	-	-
Reserved for Probation Drug	-	-	-	-	-
Reserved for Law Enforcement	-	-	-	-	-
Reserved for Equitable Sharing	-	-	-	-	-
Assigned for Capital	-	-	-	-	-
Unassigned for Capital	-	-	-	-	-
Unreserved - Unassigned	16,999,727	16,939,083	15,546,970	14,905,767	14,624,172
Total Fund Balance	17,705,615	17,605,280	16,706,642	16,126,306	15,824,236
	2009	2010	2011	2012	2013
Reserved for Encumbrances	-	-	-	-	1,329,835
Reserved for Inventory	133,190	151,535	132,807	121,637	130,512
Reserved for Advances to Other Funds	-	-	-	-	-
Reserved for Prepaid Expenditures	147,842	144,689	188,457	156,084	390,868
Reserved for Jail Surcharge	1,191,638	770,706	270,530	139,865	292,778
Reserved for Metro Task Fund	-	250,308	177,416	166,755	138,998
Reserved for Supp Juv Services	-	24,199	21,690	18,626	14,811
Reserved for Probation Drug	-	345,543	316,801	240,196	233,925
Reserved for Law Enforcement	-	-	-	-	-
Reserved for Equitable Sharing	-	26,513	9,089	-	-
Assigned for Capital	-	-	-	-	-
Unassigned for Capital	-	-	-	-	-
Unreserved - Unassigned	14,020,081	12,192,664	12,103,668	14,441,827	11,734,581
Total Fund Balance	15,492,751	13,906,157	13,220,458	15,284,990	14,266,308

Floyd County General Fund Fund Balance Last 25 Years

	2014	2015	2016	2017	2018
Reserved for Encumbrances	1,272,925	898,015	1,239,065	2,532,335	3,221,100
Reserved for Inventory	123,516	172,699	222,223	219,670	243,002
Reserved for Advances to Other Funds	-	-	-	-	-
Reserved for Prepaid Expenditures	165,656	558,122	354,390	417,607	439,937
Reserved for Jail Surcharge	220,887	195,296	229,854	398,516	503,875
Reserved for Metro Task Fund	468,525	347,916	520,612	621,329	733,836
Reserved for Supp Juv Services	11,319	6,010	973	6,363	11,368
Reserved for Probation Drug	264,172	240,035	224,441	140,605	120,265
Reserved for Law Enforcement	-	-	553,918	648,343	14,224
Reserved for Equitable Sharing	-	-	-	-	-
Assigned for Capital	-	-	-	-	-
Unassigned for Capital	-	-	-	-	-
Unreserved - Unassigned	12,177,028	14,065,371	15,431,941	13,222,440	13,183,101
Total Fund Balance	14,704,028	16,483,464	18,777,417	18,207,208	18,470,708

	2019	2020	2021	2022	2023
Reserved for Encumbrances	3,588,150	4,422,650	3,679,820	4,094,065	-
Reserved for Inventory	315,820	278,381	295,146	300,901	323,432
Reserved for Advances to Other Funds	-	-	-	-	-
Reserved for Prepaid Expenditures	433,900	435,755	325,161	551,853	828,717
Reserved for Jail Surcharge	372,362	75,065	212,137	199,485	203,062
Reserved for Metro Task Fund	723,417	822,425	815,751	510,880	612,431
Reserved for Supp Juv Services	16,557	20,744	24,529	30,820	36,285
Reserved for Probation Drug	168,491	228,834	232,310	304,644	397,914
Reserved for Law Enforcement	15,390	114,551	94,020	316,607	822,950
Reserved for Equitable Sharing	-	-	-	-	-
Assigned for Capital	-	-	10,000,000	10,050,000	5,000,000
Unassigned for Capital	-	-	-	-	-
Unreserved - Unassigned	12,160,384	12,870,033	13,417,428	9,946,936	13,635,713
Total Fund Balance	17,794,471	19,268,438	29,096,302	26,306,191	21,860,504

**Floyd County
Fund Balances/Net Position by Fund
Last 25 Years**

Year	General	Water	Airport	Forum ^{1,3,4}	Recycling ^{1,3}	Health Insurance ²	E911	Solid Waste ¹	EMA ¹	Fire
1999	14,395,074	15,336,028	3,861,476	53,640	22,468	-	-	1,297,823	-	359,861
2000	19,035,300	16,727,726	3,769,467	8,111,129	941,025	-	-	355,331	-	94,361
2001	22,581,194	17,742,543	3,764,765	7,920,965	525,426	-	51,533	94,368	14,071	141,315
2002	17,715,487	18,569,474	3,795,416	7,710,497	588,000	-	398,484	311,808	19,470	580,848
2003	17,497,010	20,369,895	3,698,828	7,643,651	709,321	-	522,547	446,206	11,632	1,150,028
2004	17,705,615	22,166,562	3,679,118	7,353,961	699,691	-	642,195	532,737	56,008	1,661,570
2005	17,605,280	24,164,348	5,339,027	7,126,569	626,291	-	759,742	742,894	81,905	2,275,181
2006	16,706,642	25,501,998	5,277,269	6,913,652	581,449	-	197,429	842,519	92,721	2,863,735
2007	16,126,306	27,299,047	5,582,090	6,644,927	495,539	(11,445)	389,652	977,744	78,887	2,894,347
2008	15,824,236	28,430,579	6,048,482	6,308,108	455,309	9,665	531,631	1,087,326	43,876	2,805,763
2009	15,492,751	29,628,437	7,272,176	6,028,696	470,914	430,903	684,186	1,201,270	22,638	2,759,205
2010	13,906,157	30,447,197	8,552,113	5,939,264	698,474	143,774	755,835	1,259,373	43,590	2,412,784
2011	13,220,458	31,242,625	9,391,962	6,129,854	984,690	1,488,802	722,059	1,405,144	32,798	2,054,945
2012	15,284,990	33,059,747	9,443,909	6,089,010	1,057,472	2,655,543	542,672	1,390,743	16,936	1,877,115
2013	14,266,308	34,773,152	8,678,255	5,896,257	1,068,022	2,127,478	560,545	1,298,296	15,936	2,129,199
2014	14,704,028	35,437,931	7,786,325	5,626,898	969,378	3,006,348	665,712	1,343,139	62,520	2,251,022
2015	16,483,464	36,894,849	7,731,904	5,372,499	734,544	3,773,392	514,148	1,329,675	66,731	2,487,826
2016	18,777,417	38,535,614	6,997,239	5,093,118	476,210	3,646,959	425,719	1,345,023	60,356	2,850,717
2017	18,207,208	40,058,024	6,510,929	5,355,382	341,775	2,577,105	236,817	1,251,271	45,772	3,055,491
2018	18,470,708	41,663,129	6,063,037	5,181,279	1,926,179	669,700	243,153	1,235,345	53,274	3,690,836
2019	17,794,471	49,113,427	7,382,069	4,833,483	1,623,225	-	303,429	1,234,612	27,747	4,657,113
2020	19,268,438	50,065,291	8,038,483	4,463,617	1,481,220	724	383,512	1,213,120	53,363	6,777,658
2021	29,096,302	51,082,857	7,598,113	4,141,219	1,347,812	791,581	366,643	1,292,560	36,601	7,556,929
2022	26,306,191	49,918,678	7,721,277	4,146,120	1,409,637	2,185,973	410,076	1,155,171	5	8,181,099
2023	21,860,504	48,758,274	7,485,409	-	1,324,284	3,950,626	116,935	1,293,266	8,927	8,316,215

¹Forum, EMA, Solid Waste and Recycling funds were previously part of the General Fund.

²Health Insurance fund was not created until the county was self-insured.

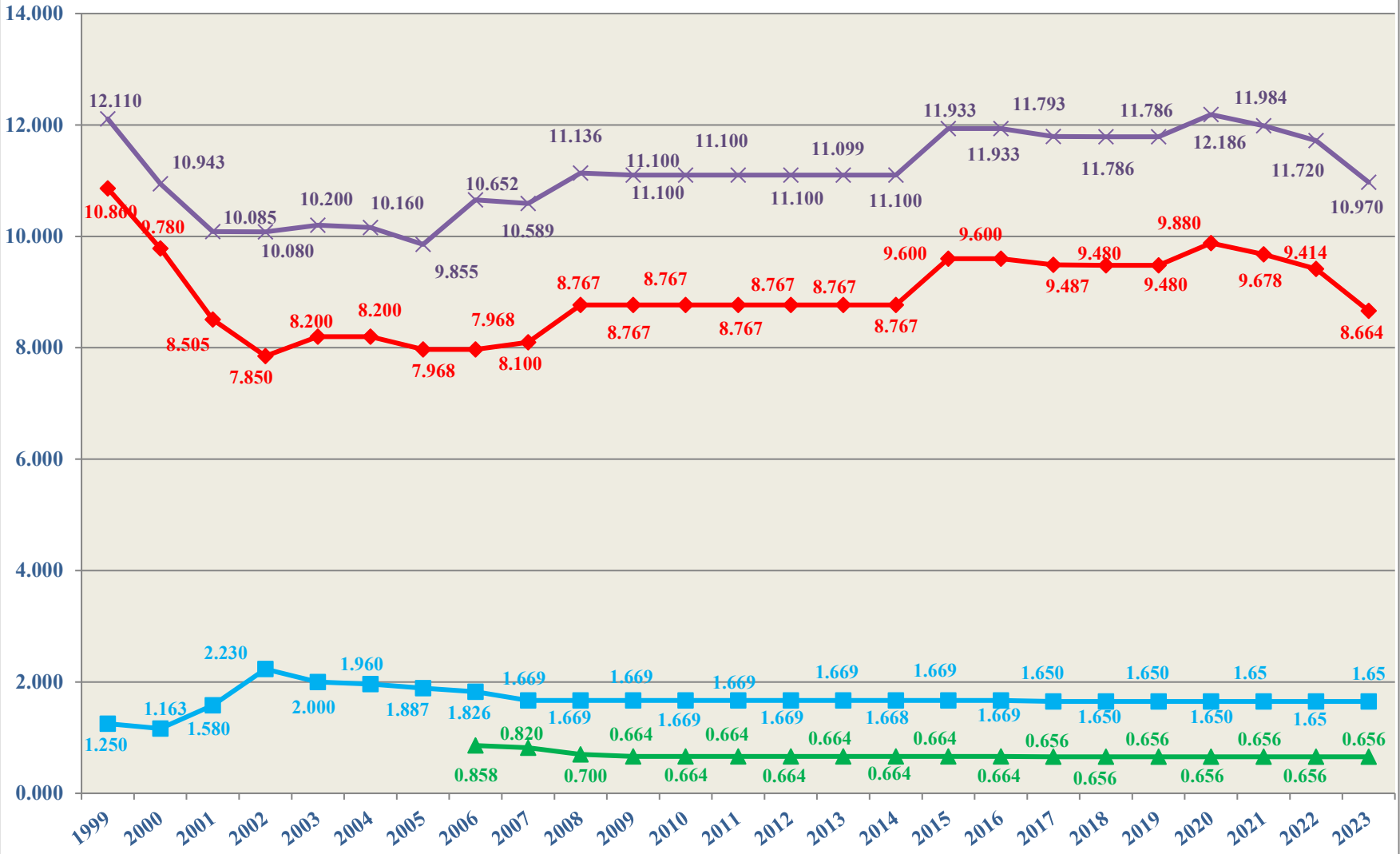
³As of January 1, 2001, the Forum and Recycling funds were reclassified from Special Revenue Funds to Enterprise Funds. The previous year was re-stated.

⁴As of December 31, 2023, ownership of the Forum transferred to the City of Rome.

Note: This does not include all funds of the County.

Floyd County Millage Rates Last 25 Years

- ◆ General
- Fire
- ▲ Solid Waste
- ✕ Total



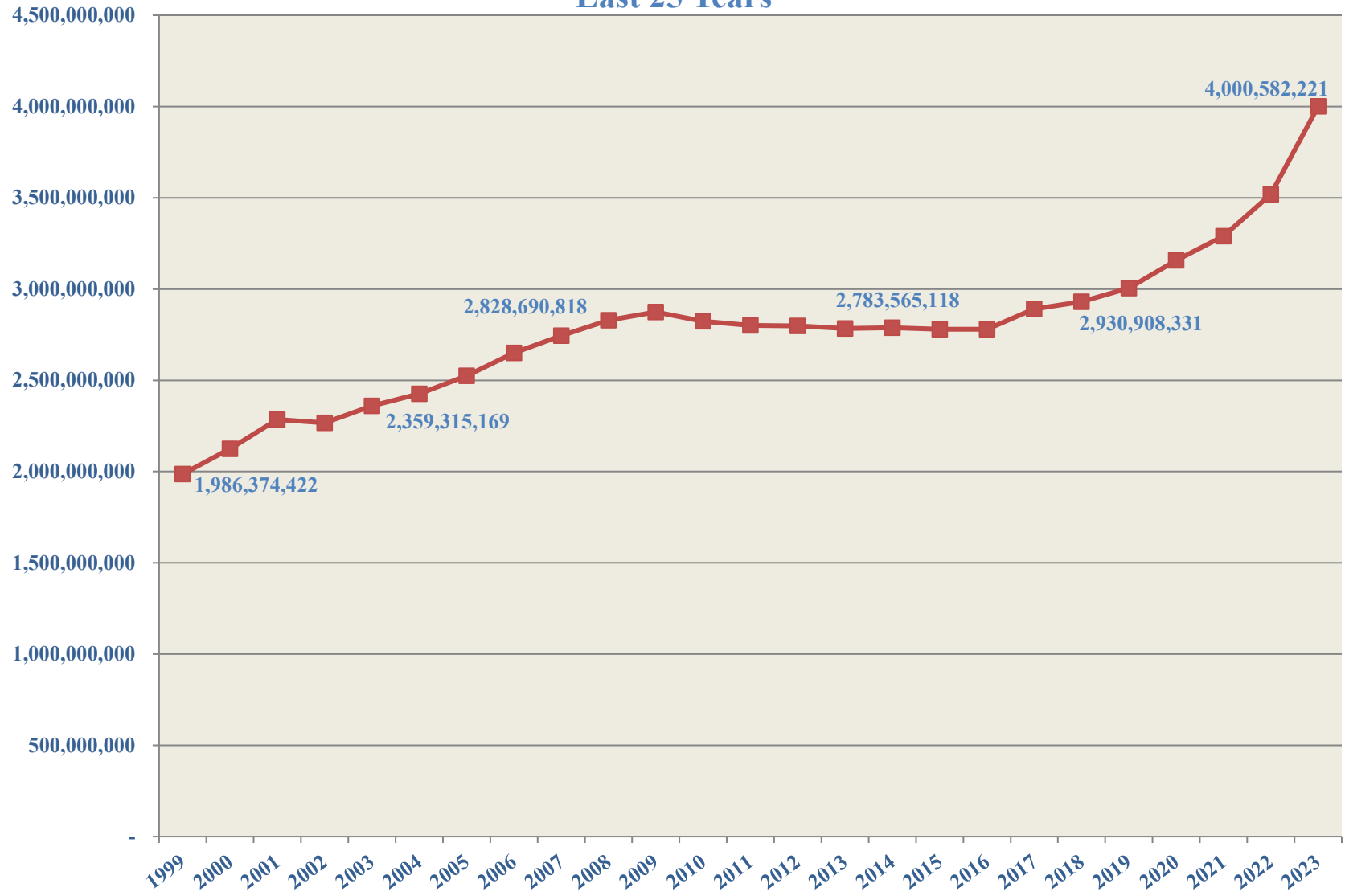
Millage Rate Totals Last 25 Years

	1999	2000	2001	2002	2003
General	10.860	9.780	8.505	7.850	8.200
Fire	1.250	1.163	1.580	2.230	2.000
Solid Waste			0.858	0.820	0.700
Total	12.110	10.943	10.943	10.900	10.900
	2004	2005	2006	2007	2008
General	8.200	7.968	7.968	8.100	8.767
Fire	1.960	1.887	1.826	1.669	1.669
Solid Waste	0.685	0.660	0.639	0.664	0.664
Total	10.845	10.515	10.433	10.433	11.100
	2009	2010	2011	2012	2013
General	8.767	8.767	8.767	8.767	8.767
Fire	1.669	1.669	1.669	1.669	1.669
Solid Waste	0.664	0.664	0.664	0.664	0.664
Total	11.100	11.100	11.100	11.100	11.100
	2014	2015	2016	2017	2018
General	8.767	9.600	9.600	9.487	9.480
Fire	1.668	1.669	1.669	1.650	1.650
Solid Waste	0.664	0.664	0.664	0.656	0.656
Total	11.099	11.933	11.933	11.793	11.786
	2019	2020	2021	2022	2023
General	9.480	9.880	9.678	9.414	8.664
Fire	1.650	1.650	1.650	1.650	1.650
Solid Waste	0.656	0.656	0.656	0.656	0.656
Total	11.786	12.186	11.984	11.720	10.970

FLOYD COUNTY, GEORGIA
TAX MILLAGE RATES
PER \$1,000 ASSESSED VALUE
Last 25 Years

Fiscal Year	Floyd County				County School District			Grand Total County	City of Rome					State	Grand Total
	General Fund	Fire Fund	Solid Waste Fund	Total Floyd County	General Fund	Debt Service Fund	Total County Schools		General Fund	Capital Fund	Debt Service Fund	City Schools	Total City		
1999	10.860	1.250	-	12.110	16.850	-	16.850	28.960	6.470	1.710	1.250	15.040	24.470	0.250	53.680
2000	9.780	1.163	-	10.943	15.707	-	15.707	26.650	6.300	1.650	1.170	14.980	24.100	0.250	51.000
2001	8.505	1.580	0.858	10.943	15.707	-	15.707	26.650	6.700	1.650	-	14.980	23.330	0.250	50.230
2014	8.767	1.668	0.664	11.099	18.580	-	18.580	29.679	6.800	1.900	-	17.450	26.150	0.100	55.929
2015	9.600	1.669	0.664	11.933	18.580	-	18.580	30.513	6.800	1.886	-	17.450	26.136	0.050	56.70
2016	9.600	1.669	0.664	11.933	18.580	-	18.580	30.513	8.150	1.936	-	17.450	27.536	-	58.05
2017	9.487	1.650	0.656	11.793	18.355	-	18.355	30.148	8.151	1.935	-	17.450	27.536	-	57.68
2018	9.480	1.650	0.656	11.786	18.300	-	18.300	30.086	8.586	1.500	-	17.450	27.536	-	57.62
2019	9.480	1.650	0.656	11.786	18.250	-	18.250	30.036	8.586	1.500	-	17.450	27.536	-	57.57
2020	9.880	1.650	0.656	12.186	18.250	-	18.250	30.436	8.151	1.935	-	17.450	27.536	-	57.97
2021	9.678	1.650	0.656	11.984	18.200	-	18.200	30.184	8.151	1.826	-	17.450	27.427	-	57.61
2022	9.414	1.650	0.656	11.720	17.950	-	17.950	29.670	17.414	1.826	-	17.250	36.490	-	66.16
2023	8.664	1.650	0.656	10.970	17.700	-	17.700	28.670	7.800	1.800	-	16.850	26.450	-	55.12

Floyd County Total Assessed Value Last 25 Years



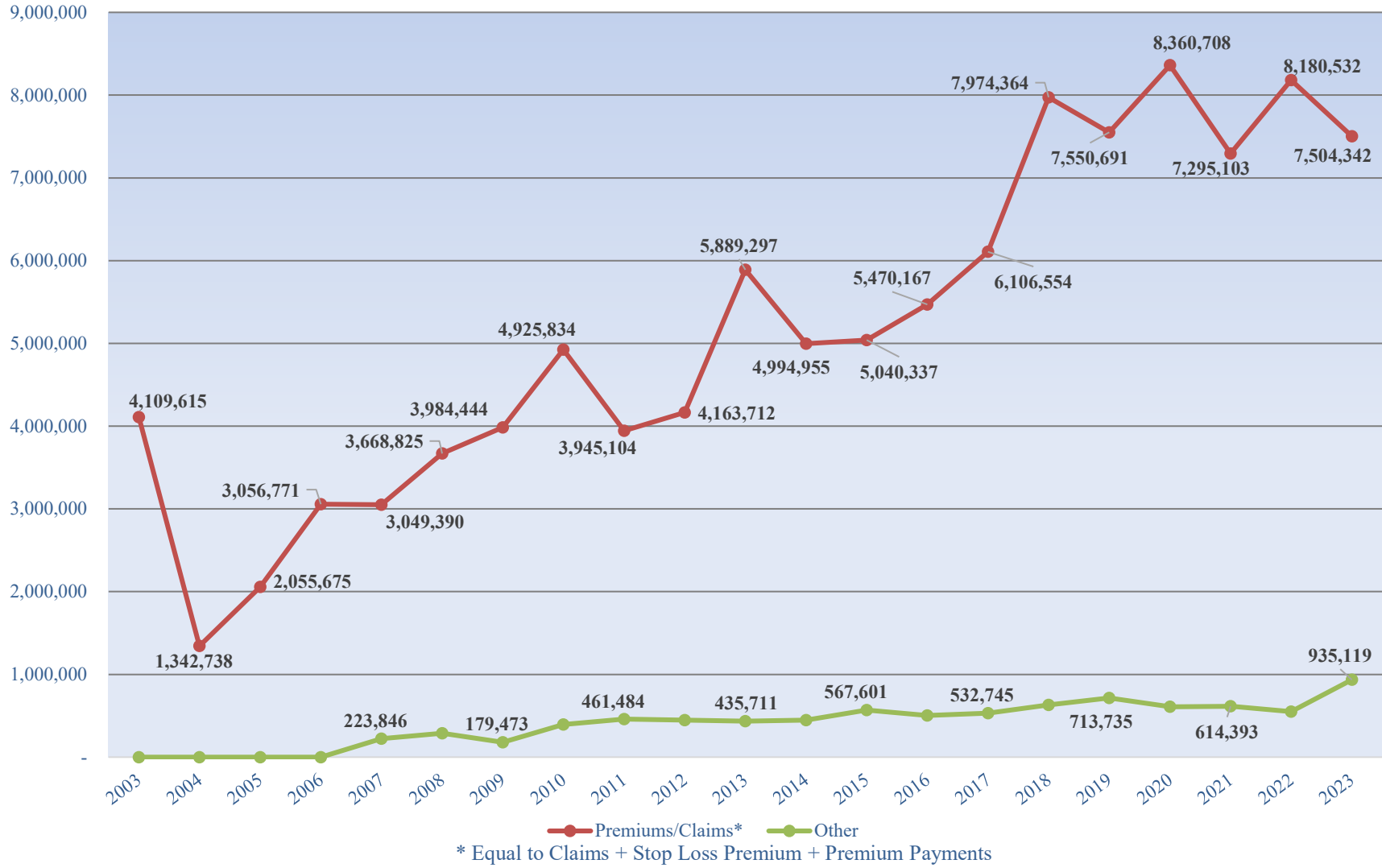
Total Assessed Value Last 25 Years

1999 1,986,374,422	2000 2,125,012,129	2001 2,285,014,358	2002 2,266,407,234	2003 2,359,315,169
2004 2,425,488,091	2005 2,524,645,437	2006 2,650,122,472	2007 2,744,391,910	2008 2,828,690,818
2009 2,873,855,969	2010 2,824,052,330	2011 2,800,570,219	2012 2,798,708,158	2013 2,783,565,118
2014 2,787,823,870	2015 2,780,206,717	2016 2,779,543,244	2017 2,891,598,688	2018 2,930,908,331
2019 3,005,315,791	2020 3,157,890,248	2021 3,290,276,129	2022 3,519,009,405	2023 4,000,582,221

**Consumer Price Index
Last 25 Years**

Year	% Increase
1999	2.2
2000	3.4
2001	2.8
2002	1.6
2003	2.3
2004	2.7
2005	3.4
2006	3.2
2007	2.8
2008	3.8
2009	-0.4
2010	1.6
2011	3.2
2012	2.1
2013	1.5
2014	1.6
2015	0.1
2016	1.3
2017	2.1
2018	2.4
2019	1.8
2020	1.2
2021	4.7
2022	8.0
2023	4.1
Avg.	2.5

Floyd County Health Insurance Premiums/Claims Last 21 years



Floyd County
Health Insurance Premiums/Claims
Last 21 Years

Year	Premiums/Claims*	Other
2003	4,109,615	-
2004	1,342,738	-
2005	2,055,675	-
2006	3,056,771	-
2007	3,049,390	223,846
2008	3,668,825	289,642
2009	3,984,444	179,473
2010	4,925,834	394,305
2011	3,945,104	461,484
2012	4,163,712	449,024
2013	5,889,297	435,711
2014	4,994,955	447,152
2015	5,040,337	567,601
2016	5,470,167	502,479
2017	6,106,554	532,745
2018	7,974,364	630,512
2019	7,550,691	713,735
2020	8,360,708	608,174
2021	7,295,103	614,393
2022	8,180,532	551,304
2023	7,504,342	935,119

* Equal to Claims + Stop Loss Premium + Premium Payments

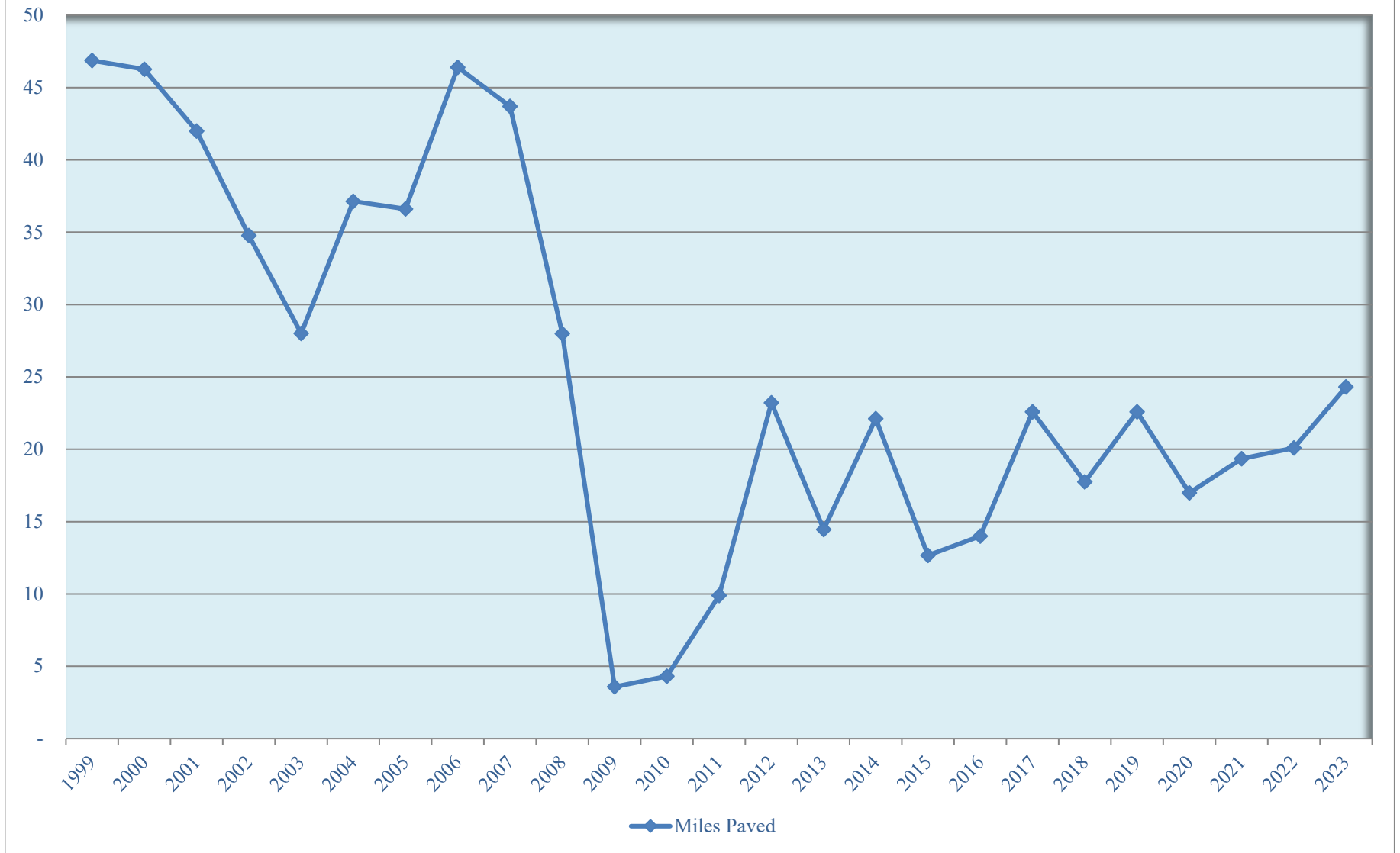
Note: Data not readily available prior to 2002.

Health Insurance Fund created in 2007.

Floyd County
Health Insurance Premium/ Claims
Last 21 Years

	Charges for Services	Claims	Other
2003	-	4,109,615	-
2004	-	1,342,738	-
2005	-	2,055,675	-
2006	-	3,056,771	-
2007	3,249,789	3,049,390	223,846
2008	3,576,369	3,668,825	289,642
2009	4,584,575	3,984,444	179,473
2010	5,031,162	4,925,834	394,305
2011	5,749,338	3,945,104	461,484
2012	5,769,563	4,163,712	449,024
2013	5,787,687	5,889,297	435,711
2014	6,310,353	4,994,955	447,152
2015	6,364,656	5,040,337	567,601
2016	6,200,700	5,470,167	502,479
2017	5,929,579	6,106,554	532,745
2018	7,068,740	7,974,364	630,512
2019	7,527,139	7,550,691	713,735
2020	8,417,431	8,360,708	608,174
2021	8,678,154	7,295,103	614,393
2022	10,827,845	8,180,532	551,304
2023	10,097,525	7,504,342	935,119

Floyd County Miles of Streets Paved Last 25 Years

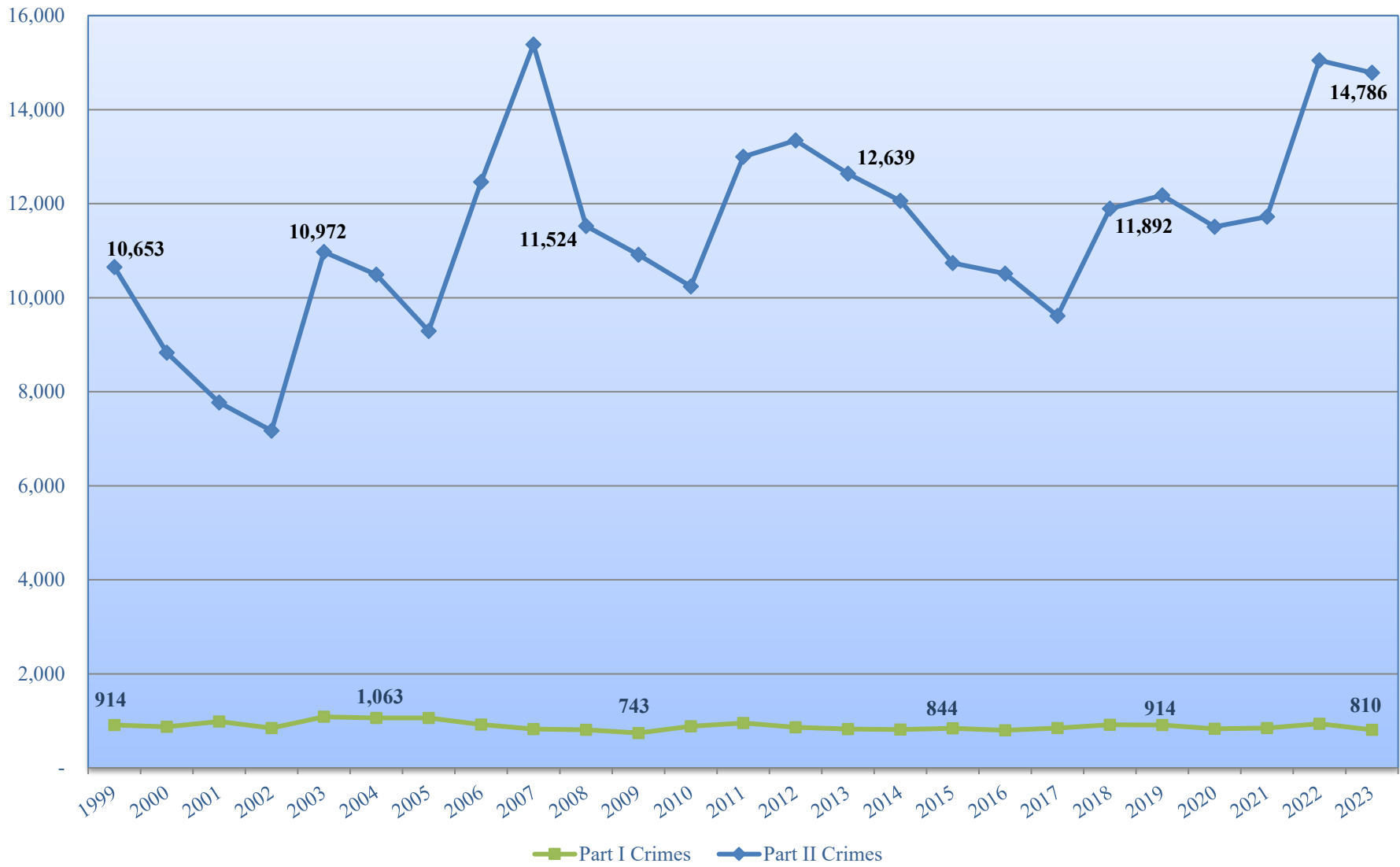


**Floyd County
Miles of Streets Paved
Last 25 Years**

Year	Miles Paved
1999	46.860
2000	46.260
2001	41.980
2002	34.770
2003	27.995
2004	37.130
2005	36.600
2006	46.400
2007	43.700
2008	27.990
2009	3.580
2010	4.320
2011	9.900
2012	23.210
2013	14.453
2014	22.110
2015	12.670
2016	14.000
2017	22.593
2018	17.736
2019	22.590
2020	16.982
2021	19.340
2022	20.096
2023	24.300

	Average Miles Paved Per Year	Total Paved Miles in Floyd	Paving Cycle (Years)
1999-2007	40.19	728	18
2008-2023	17.24	735	43

Floyd County Police Department - Incident Reports Last 25 Years



**Floyd County
Police Department - Incident Reports
Last 25 Years**

Year	Part I Crimes	Part II Crimes	Totals
1999	914	10,653	11,567
2000	872	8,831	9,703
2001	986	7,770	8,756
2002	848	7,171	8,019
2003	1,086	10,972	12,058
2004	1,063	10,490	11,553
2005	1,060	9,294	10,354
2006	925	12,459	13,384
2007	828	15,384	16,212
2008	808	11,524	12,332
2009	743	10,914	11,657
2010	887	10,239	11,126
2011	956	12,995	13,951
2012	866	13,346	14,212
2013	825	12,639	13,464
2014	815	12,059	12,874
2015	844	10,735	11,579
2016	799	10,510	11,309
2017	848	9,612	10,460
2018	916	11,892	12,808
2019	914	12,177	13,091
2020	829	11,508	12,337
2021	850	11,721	12,571
2022	941	15,050	15,991
2023	810	14,786	15,596

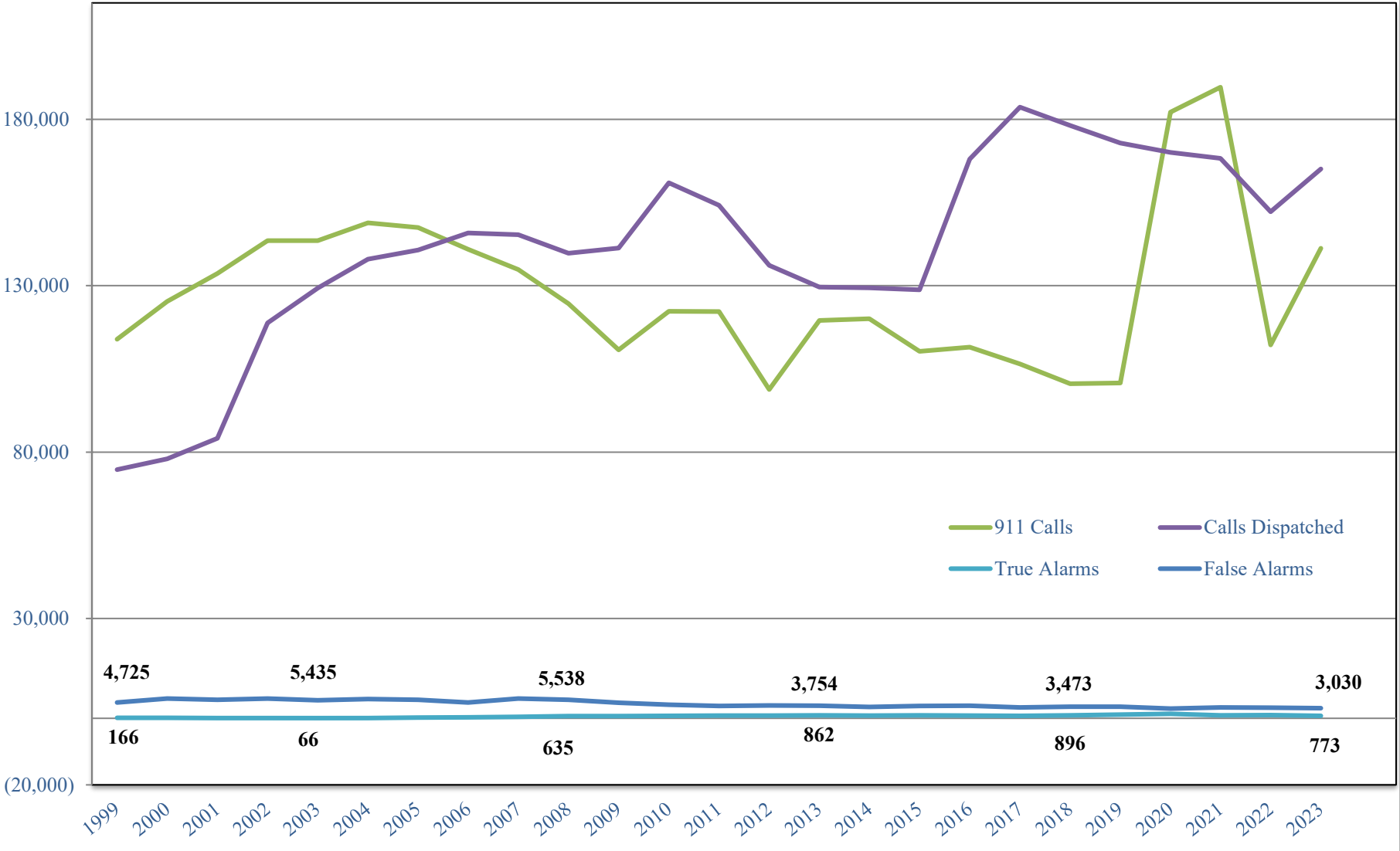
PART I CRIMES

Homicide
Rape
Robbery
Aggravated Assault
Burglary
Auto Theft
Arson

PART II CRIMES

Simple Battery
Forgery
Theft by:
 Taking
 Deception
 Conversion
 Receiving
 Services
 Shoplifting
 Fraud
Vandalism
Sex Offenses
Violation Ga. Controlled Substances Act
Offenses Against Family and Children
Alcohol Offenses
Drunk
Disorderly Conduct
DUI
All Other Offenses

Floyd County E911 Activity Report Last 25 Years



**Floyd County
E911 Activity Report
Last 25 Years**

Year	911 Calls	Calls Dispatched	True Alarms	False Alarms
1999	113,892	74,737	166	4,725
2000	125,262	78,004	164	5,919
2001	133,683	84,113	112	5,580
2002	143,533	118,830	74	5,932
2003	143,528	129,286	66	5,435
2004	148,893	137,981	77	5,763
2005	147,516	140,751	207	5,595
2006	140,977	145,849	262	4,739
2007	134,866	145,358	471	5,908
2008	124,606	139,766	635	5,538
2009	110,737	141,329	643	4,691
2010	122,287	160,945	778	4,110
2011	122,204	154,191	782	3,688
2012	98,819	136,141	846	3,848
2013	119,553	129,627	862	3,754
2014	120,050	129,359	837	3,445
2015	110,306	128,738	890	3,696
2016	111,576	168,027	801	3,780
2017	106,477	183,669	779	3,256
2018	100,533	178,172	896	3,473
2019	100,754	172,850	1,140	3,528
2020	182,154	170,044	1,349	2,921
2021	189,661	168,295	882	3,276
2022	112,217	152,249	936	3,177
2023	141,285	165,100	773	3,030

1999- 911 calls were counted as only incoming calls on the 911 lines. Prior to that all outgoing and incoming calls were counted. Calls dispatched include all self-initiated activity by law enforcement for which 911 logs a call.

2009- The decrease in False alarms beginning in the year is a result of increased enforcement of City/County false alarm ordinances.

2022- Unable to provide accurate 911 Call data for this period. This is due to renovations at the 911 center and operations being conducted out of the backup center during the months of Aug 2022 - Mar 2023. There was no redundant system in place that kept track of call data. Until Aug of 2022 the number was 112,217.

2023- Unable to provide accurate 911 Call data for part of this period. This is due to renovations at the 911 center and operations. Jan-March of 2023 were not tallied in total call data.